

# Guidelines en échographie foetale

3<sup>E</sup> TRIMESTRE (CNEOF 2016)

Dr. Jean-Philippe Bault  
Plateforme Lumière Necker, CPDP Poissy St-Germain, les Mureaux  
Grégoire Potelle  
Voluson France



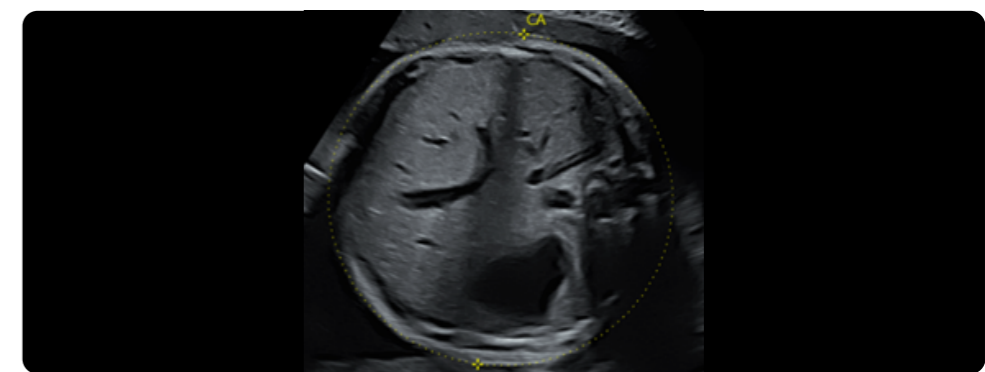
BIP / VL



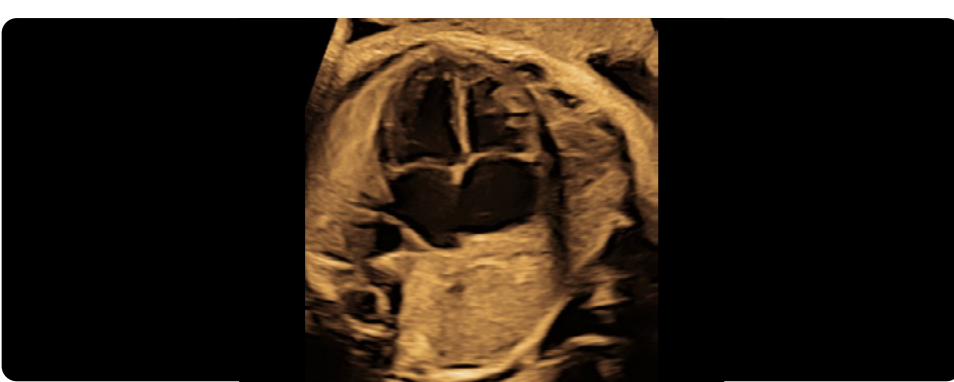
PC



PA



4 Cavités



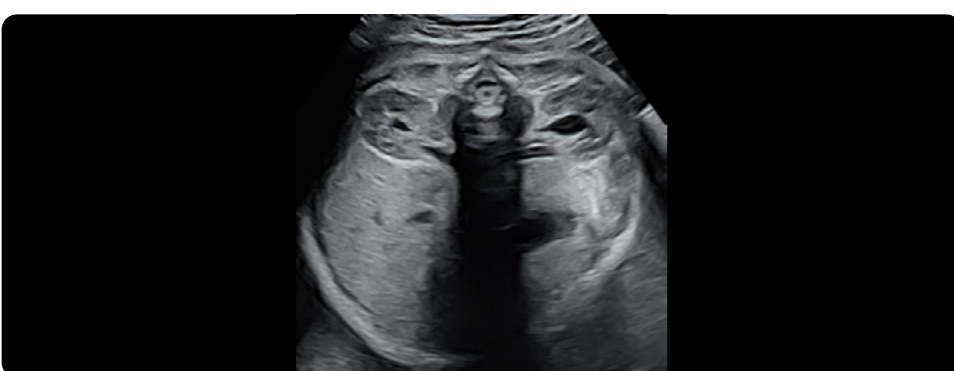
Aorte



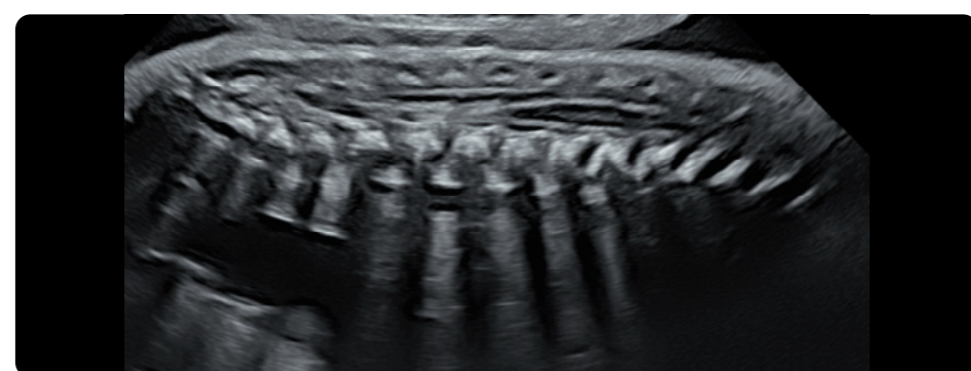
Artères pulmonaires



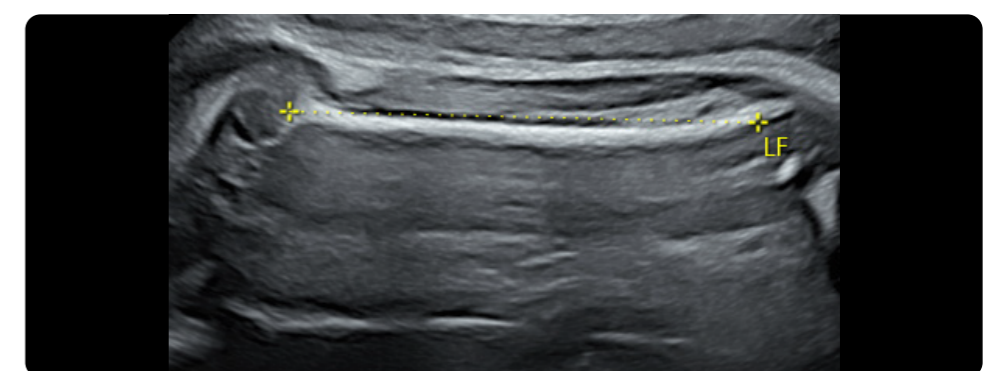
Reins



Rachis



Fémur



## CRITÈRES DE QUALITÉ D'IMAGERIE

- 1. Profondeur / Angle
- 2. Focale
- 3. Fréquence
- 4. Gain

+ d'infos en audio →

