

# Le crâne foetal et les sutures osseuses en échographie

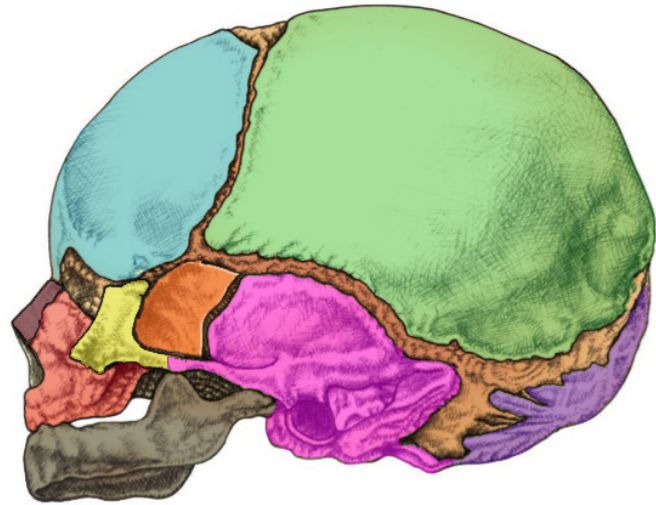


**Docteur Jean-Philippe Bault**  
CHU Bicêtre, CPDP Poissy Saint-Germain, Les Mureaux

**Docteur Jean-Marc Levillant**  
CHU Bicêtre, CHI Créteil, Créteil

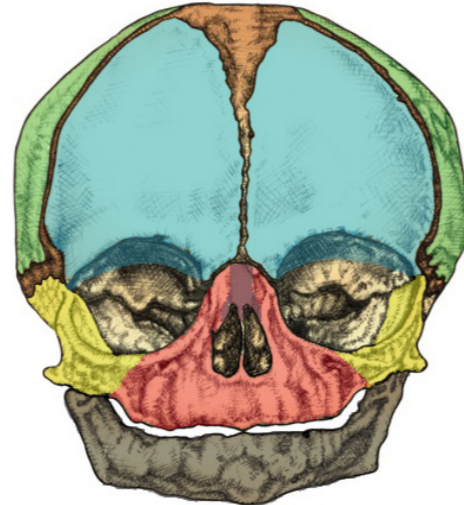
**Grégoire Potelle**  
Voluson France

Plan Sagittal



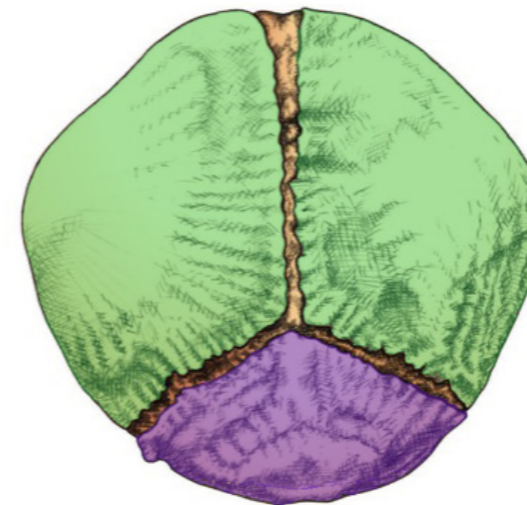
- Os nasal
- Os temporal
- Mandibule

Plan Frontal



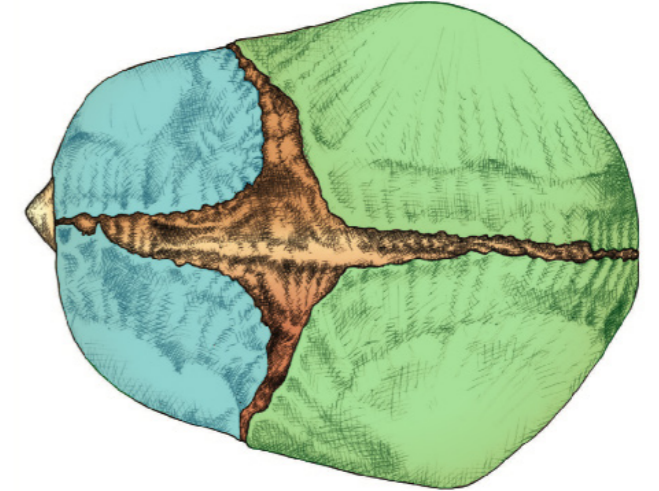
- Os maxillaire
- Os malaire

Plan Occipital



- Os sphénoïdal
- Os occipital

Plan Axial



- Os pariétal
- Os frontal

Suture Coronale

Suture Squameuse

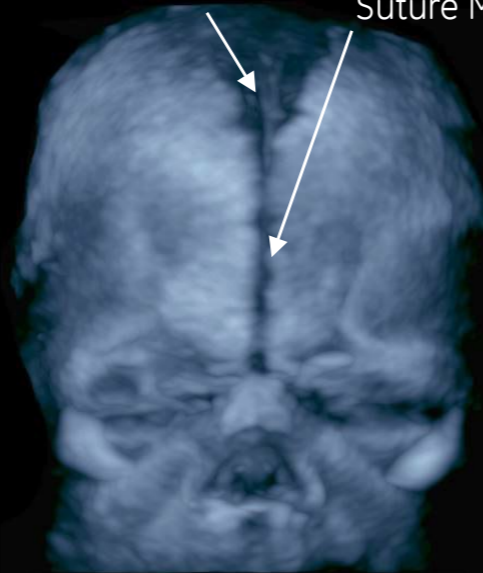
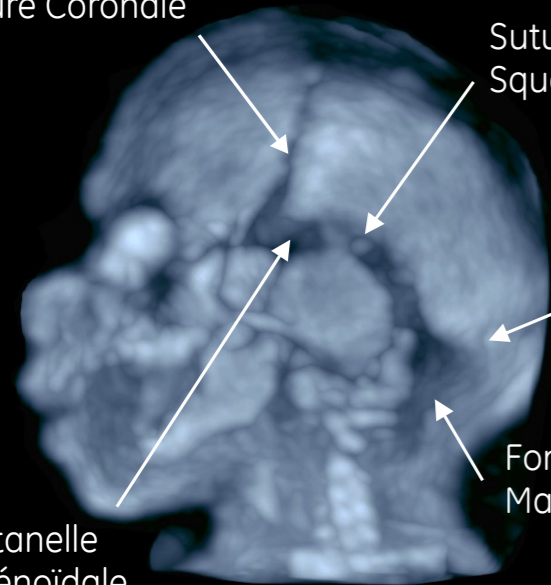
Fontanelle Antérieure

Suture Métopique

Suture Lambdoïde

Fontanelle Mastoïdienne

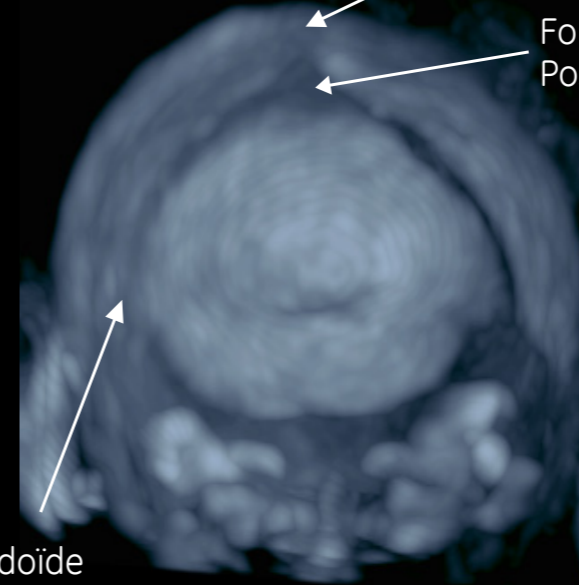
Fontanelle Sphénoïdale



Suture Lambdoïde

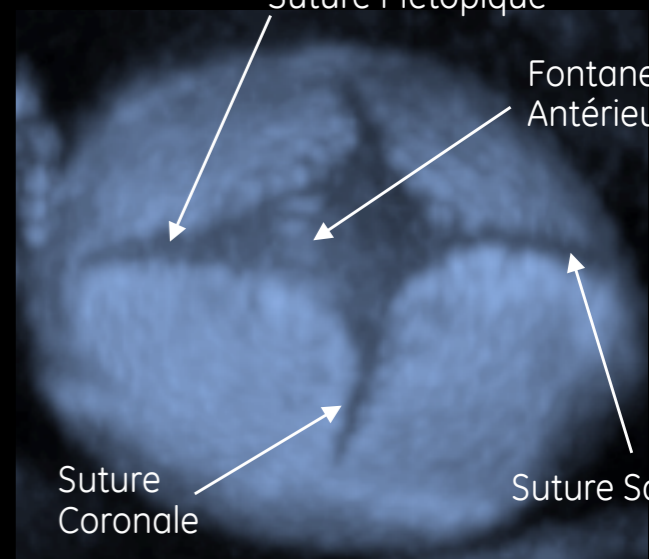
Suture Sagittale

Fontanelle Postérieure



Suture Métopique

Fontanelle Antérieure



Suture Coronale

Suture Sagittale

