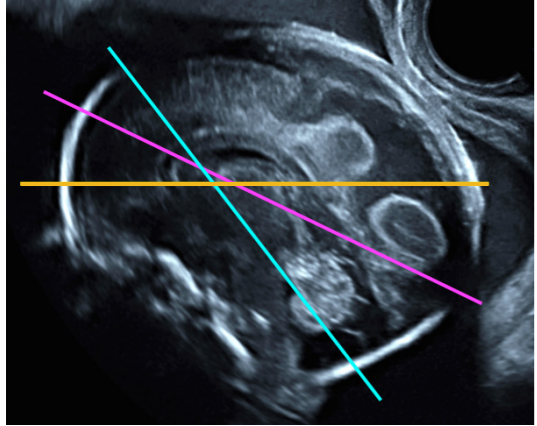


# Fetal brain, from 22 to 32 weeks

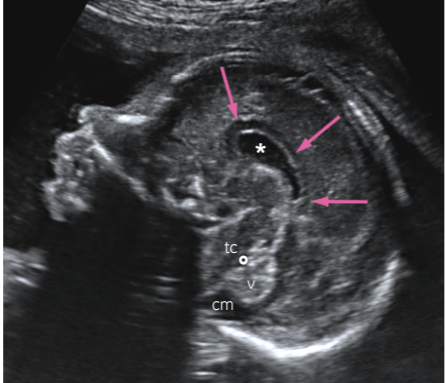
Docteur Jean-Philippe Bault  
CHU Bicêtre, CPDP Poissy Saint-Germain, Les Mureaux



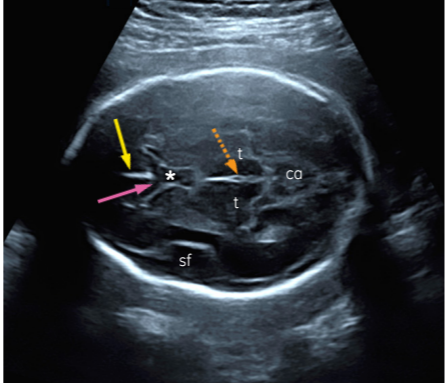
- AXIAL PLANES**
- Biparietal diameter plane
  - Lateral ventricles plane (plane of the atrial diameter measurement)
  - Posterior fossa plane

22 Weeks

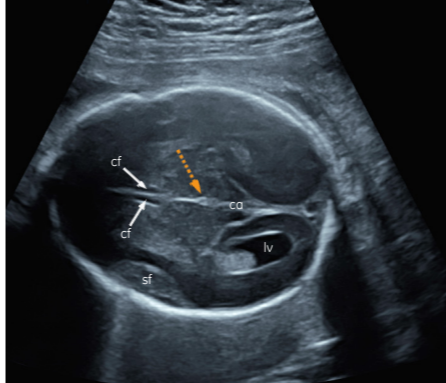
Sagittal Plane



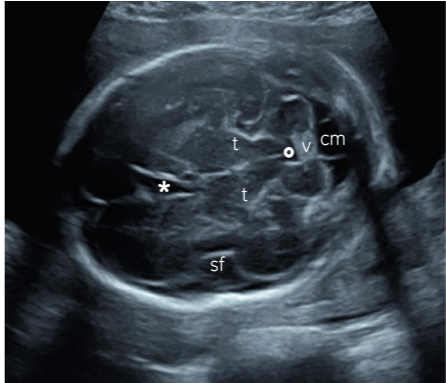
Axial Plane Biparietal Plane



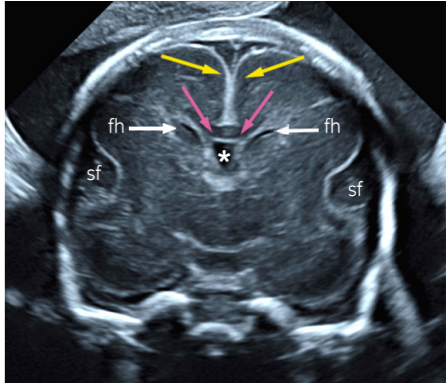
Axial Plane Ventricles Plane



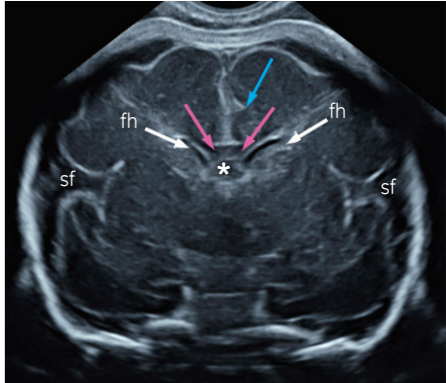
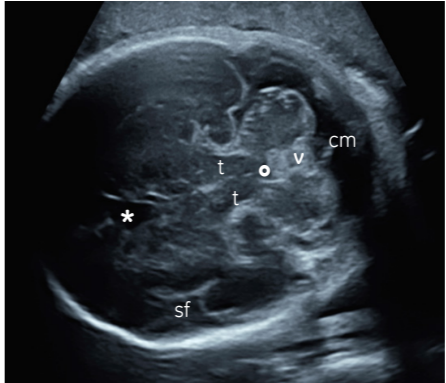
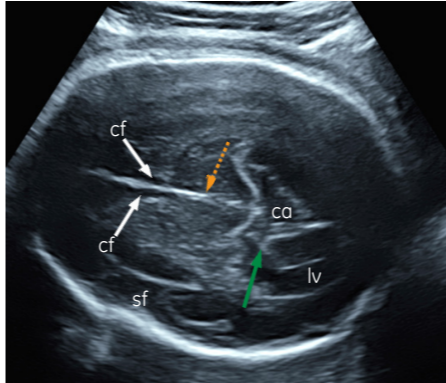
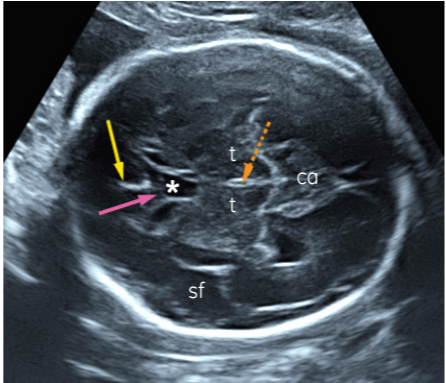
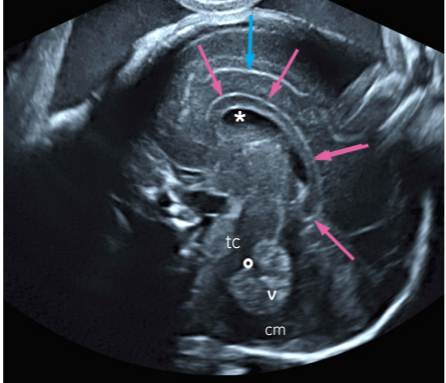
Axial Plane Posterior Fossa Plane



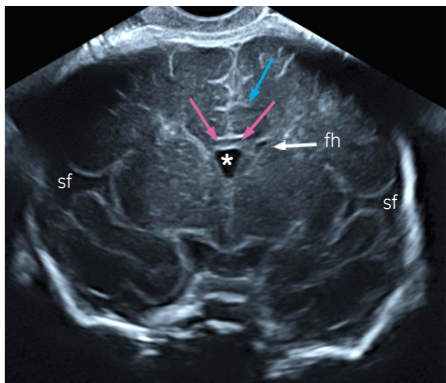
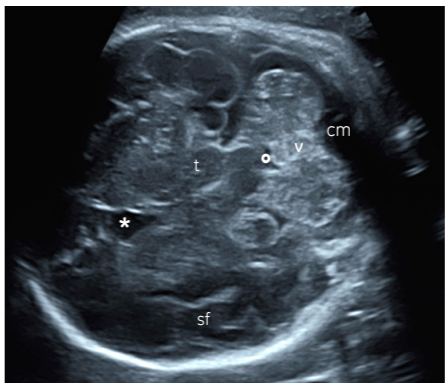
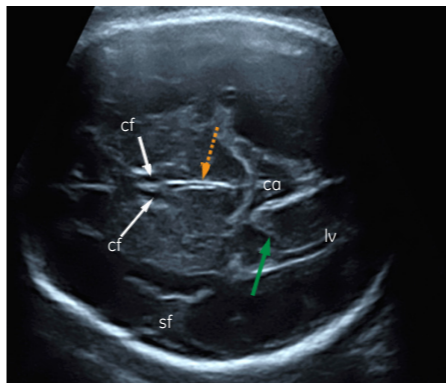
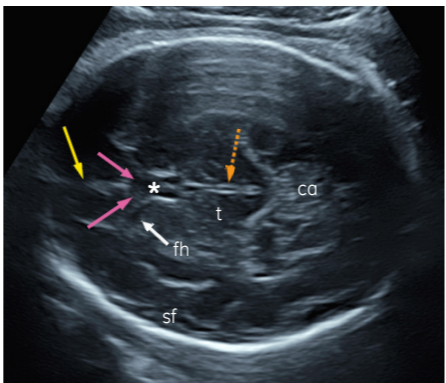
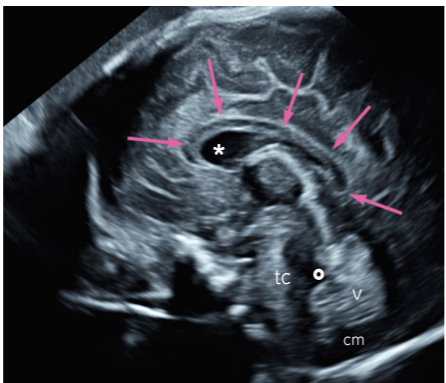
Coronal Plane



28 Weeks



32 Weeks



**LEGEND**

- fh : Frontal horns of lateral ventricles
- t : Thalami
- : Fourth Ventricle
- ➔ Falx cerebri
- \* : Cavity of the septum pellucidum
- ca : Cisterna ambiens
- v : Vermis
- : Fourth Ventricle
- ➔ Corpus callosum
- cf : Crura of fornix
- sf : Sylvian fissures
- tc : Brain stem
- cm : Cisterna magna
- ➔ Internal occipital fissure
- ➔ Cingulate Fissure
- ⋯➔ Third ventricle

